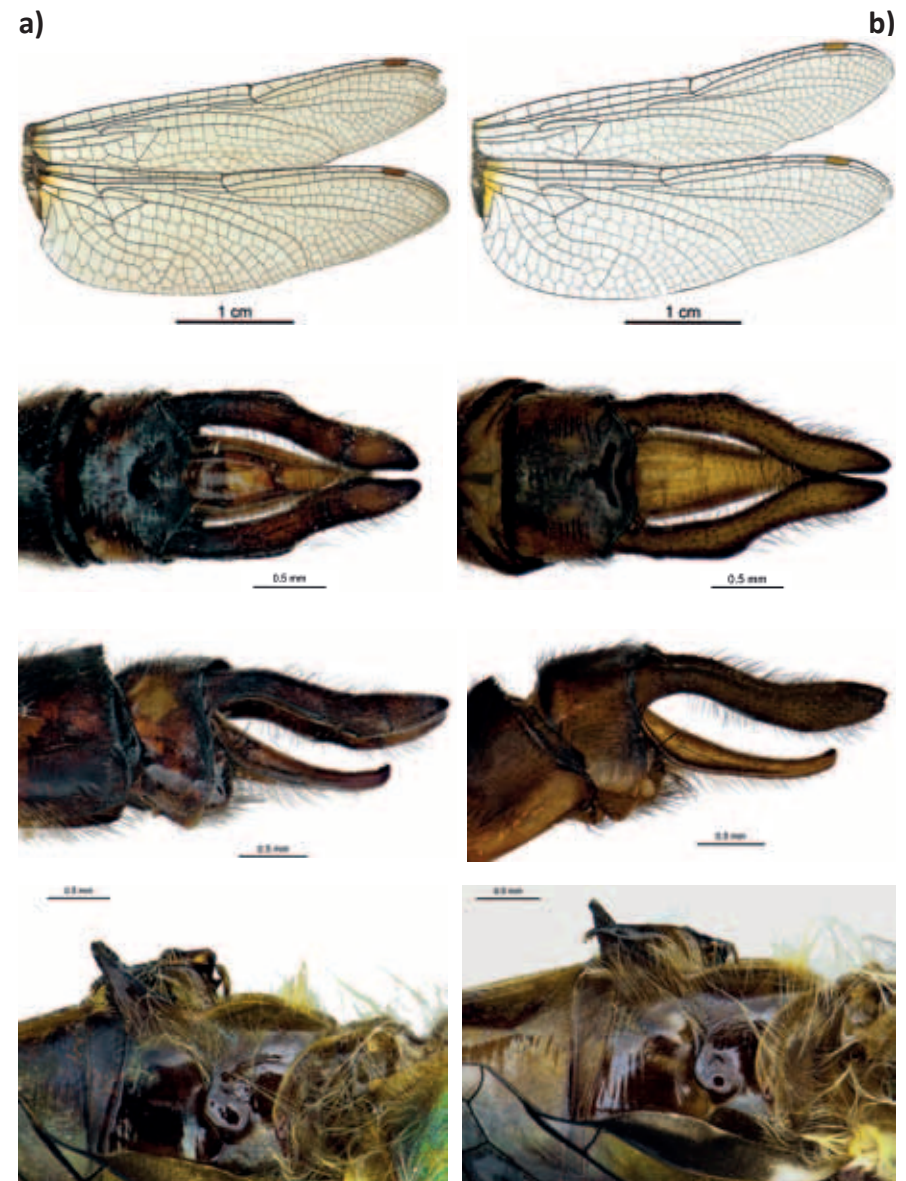


**Figure 3.** Wing colouration, vulvar scale and appendages (dorsal view) of females of *Procordulia smithii* from New Zealand.



**Figure 4.** Comparison of the wing colouration, appendages (dorsal and lateral views) and secondary genitalia of the two male *Antipodochlora braueri* reported in this study from (a) locality 1; (b) locality 3.